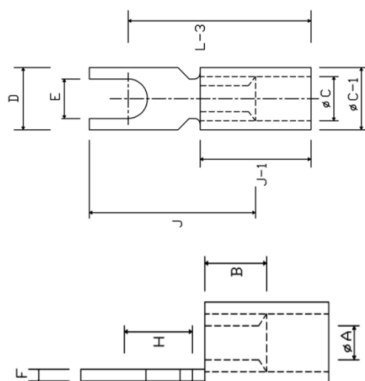


## COPPER FORK CABLE LUG

### CRIMPING TYPE INSULATED TINNED COPPER FORK CABLE TERMINAL END



PESSRL Pin lugs with PVC insulation are essential components for ensuring safe and efficient electrical connections in a variety of applications. Commonly used in wire harnesses, automotive systems, and low-voltage electrical circuits, these insulated pin lugs provide both mechanical strength and electrical reliability.



- All the terminals are tin plated to avoid oxidation and to achieve maximum corrosion protection.
- The insulation sleeve, often made from PVC, protects against moisture, chemicals, and abrasion, ensuring long-lasting performance and reliability in diverse environments.
- Material: Copper (ETP) IS 1897
- Finish: Electro tin to BS 1872 (1984)
- Color coding of insulation sleeve

■ 1.5   
 ■ 2.5   
 ■ 4-6

Nominal Cross Section mm <sup>2</sup>	PESSRL CAT NO.	Size of Bolt Die	A	C	D	F	B	H	J	C-1	J-1	L-3	COLOR
1.5	PESFI-7926	3.5	1.6	3.2	1.9	0.8	5	10	17	4.8		10	
	PESFI-7927	3	1.6	3.2	3.1	0.8	5	10	17	4.8		10	
2.5	PESFI-7928	3.5	2.3	3.9	1.9	0.8	5	10	17	5.5		10	
	PESFI-1025	4.2	2.3	3.9	1.9	0.8	5	17	24	5.5		10	
	PESFI-7929	5	2.3	3.9	3.1	0.8	5	10	17	5.5		10	
4-6	PESFI-7930	3.1	2.9	4.9	2.7	1	6	10	20	7.1		14	
	PESFI-7931	3.5	3.6	5.6	5.1	1	6	10	20	7.1		14	