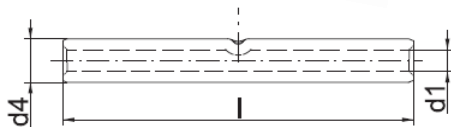


COPPER TUBULAR CABLE CONNECTORS

TUBULAR CABLE CONNECTORS AS PER 12-SDMS-02



PESSRL High Voltage Copper Compression Joint Connector Heavy Duty Terminal are design to meet the DIN-46267 Part-I requirements and made out of ETP grade copper, with purity 99.96% and having conductivity min 97.6% IACS.



- The terminal is annealed to prevent cracking during crimping, and a chamfered mouth facilitates easy cable insertion.
- Item identification on cable lug
- The terminal is coated with tin to prevent oxidation and ensure optimal corrosion resistance.
- Material - E-copper as per EN 13600
- Diemension as per 12-SDMS-02 REV:06 OR DIN-46267

Nominal Cross Section mm ²	PESSRL CAT NO.	d1	d4	l
35	PESC-35	8.2	12.5	50
185	PESC-185	19	25.5	85
240	PESC-240	21.5	29	90
300	PESC-300	24.5	32	100
500	PESC-500	31	42	160