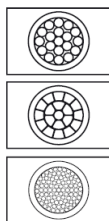
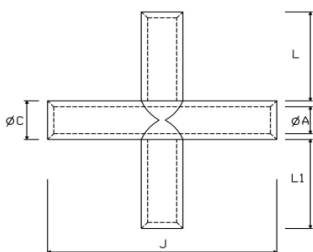


COPPER TUBULAR CABLE CONNECTOR

TUBUALR CABLE CROSS-CONNECTOR



The PESSRL Copper cross connectors are essential components used to create four-way junctions in various plumbing, HVAC, and electrical systems. Designed to facilitate the connection of multiple pipes or cables in a cross configuration, these connectors allow for efficient branching and distribution of fluids or electrical signals. Constructed from ETP grade copper with a purity of 99.96%, it boasts a minimum conductivity of 97.6% IACS.



- The terminal is annealed to prevent cracking during crimping, and a chamfered mouth facilitates easy cable insertion.
- The robust design of copper cross connectors ensures a secure, leak-proof fit, making them ideal for both high-pressure and high-current applications.
- Item identification on cable terminal
- The terminal is coated with tin to prevent oxidation and ensure optimal corrosion resistance.
- Material - Copper BS 1977/IS 191 (PART-V)

Nominal Cross Section mm ²	PESSRL CAT NO.	A	C	J	L	L-1
1.5	PESCC-1.5	1.8	3.3	30	12	12
2.5	PESCC-2.5	2.3	4.2	30	12	12
4	PESCC-4	3	5	30	12	12
6	PESCC-6	4	6	35	14	14
10	PESCC-10	4.5	7	35	14	14
16	PESCC-16	5.5	8.5	50	21	21
25	PESCC-25	7	10	55	23	23
35	PESCC-35	8.5	12	70	30	30
50	PESCC-50	10	14	80	34	34
70	PESCC-70	12	16.5	85	35	35
95	PESCC-95	13.5	18	90	36	36
120	PESCC-120	15	19.5	95	38	38
150	PESCC-150	16.5	21	110	44	44
185	PESCC-185	19	24	115	45	45
240	PESCC-240	21	26	130	52	52