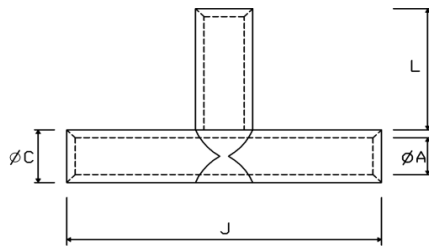


COPPER TUBULAR CABLE CONNECTOR

TUBULAR CABLE T-CONNECTOR



The PESSRL Copper T-connectors are versatile fittings designed to create reliable, three-way junctions in various piping and wiring systems. Commonly used in plumbing, HVAC installations, and electrical conduit systems, these connectors facilitate the branching of pipes or cables, allowing for efficient distribution and routing. Constructed from ETP grade copper with a purity of 99.96%, it boasts a minimum conductivity of 97.6% IACS.



- The terminal is annealed to prevent cracking during crimping, and a chamfered mouth facilitates easy cable insertion.
- The T-shaped design allows for straightforward installation and seamless integration into existing systems, providing a secure and leak-proof connection..
- Item identification on cable terminal
- The terminal is coated with tin to prevent oxidation and ensure optimal corrosion resistance.
- Material - Copper BS 1977/IS 191 (PART-V)

| Nominal Cross Section mm ² | PESSRL CAT NO. | A | C | J | L |
|---------------------------------------|----------------|------|------|-----|----|
| 1.5 | PESTC-1.5 | 1.8 | 3.3 | 30 | 12 |
| 2.5 | PESTC-2.5 | 2.3 | 4.2 | 30 | 12 |
| 4 | PESTC-4 | 3 | 5 | 30 | 12 |
| 6 | PESTC-6 | 4 | 6 | 35 | 14 |
| 10 | PESTC-10 | 4.5 | 7 | 35 | 14 |
| 16 | PESTC-16 | 5.5 | 8.5 | 50 | 21 |
| 25 | PESTC-25 | 7 | 10 | 55 | 23 |
| 35 | PESTC-35 | 8.5 | 12 | 70 | 30 |
| 50 | PESTC-50 | 10 | 14 | 80 | 34 |
| 70 | PESTC-70 | 12 | 16.5 | 85 | 35 |
| 95 | PESTC-95 | 13.5 | 18 | 90 | 36 |
| 120 | PESTC-120 | 15 | 19.5 | 95 | 38 |
| 150 | PESTC-150 | 16.5 | 21 | 110 | 44 |
| 185 | PESTC-185 | 19 | 24 | 115 | 45 |
| 240 | PESTC-240 | 21 | 26 | 130 | 52 |