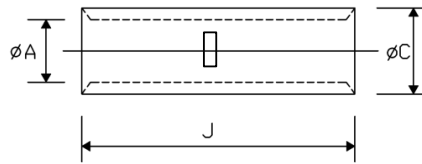


## COPPER TUBULAR CABLE CONNECTOR

### TUBUALR CABLE CONNECTOR AS PER BS 4579



The PESSRL Copper in-line connectors manufactured in accordance with IS 4579 standards are designed to ensure high-quality, reliable connections in electrical systems. These connectors are specifically engineered to meet the rigorous requirements of IS 4579, which sets forth specifications for copper connectors used in electrical installations. Constructed from ETP grade copper with a purity of 99.96%, it boasts a minimum conductivity of 97.6% IACS.



- The terminal is annealed to prevent cracking during crimping, and a chamfered mouth facilitates easy cable insertion.
- The in-line design facilitates straightforward cable joining and splicing, providing a secure and stable connection with minimal signal loss. Compliance with IS 4579 standards guarantees that these connectors deliver consistent performance, mechanical strength, and resistance to corrosion, ensuring long-lasting reliability and safety in various electrical environments.
- Item identification on cable terminal
- The terminal is coated with tin to prevent oxidation and ensure optimal corrosion resistance.
- Material - Copper BS 1977/IS 191 (PART-V)

Nominal Cross Section mm <sup>2</sup>	PESSRL CAT NO.	d1	d4	l
1.5	PESBC-1.5	1.8	3.7	15
2.5	PESBC-2.5	2.4	4	18
4	PESBC-4	3.1	4.8	19
6	PESBC-6	3.8	5.5	20
10	PESBC-10	4.5	6.2	23
16	PESBC-16	5.4	7.1	25
25	PESBC-25	6.8	9.8	35
35	PESBC-35	8.2	10.6	38
50	PESBC-50	9.5	12.4	42
70	PESBC-70	11.2	14.7	47
95	PESBC-95	13.5	17.4	47
120	PESBC-120	15	19.4	65
150	PESBC-150	16.5	21.2	65
185	PESBC-185	18.5	23.5	67
240	PESBC-240	21	26.5	80
300	PESBC-300	23.5	30	89
400	PESBC-400	26.8	34.8	100
500	PESBC-500	30	39	115
630	PESBC-630	35	45	115
800	PESBC-800	39	50.6	230
1000	PESBC-1000	43	56.2	230