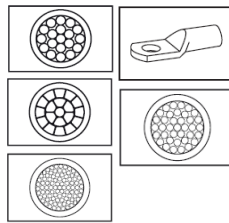
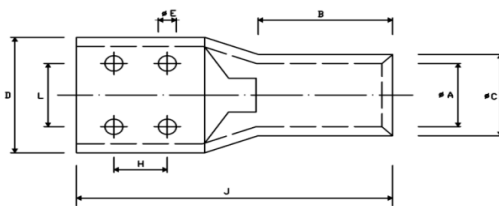
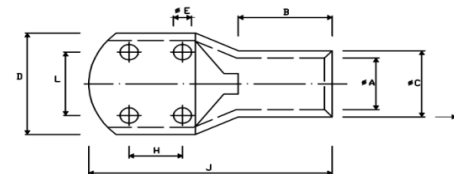


COPPER TUBULAR CABLE LUGS

TUBULAR CABLE LUGS FOUR HOLES



PESSRL Copper four-hole lugs are designed to provide secure and reliable electrical connections in applications that require multiple attachment points. These lugs are commonly used in power distribution systems, industrial machinery, and electrical panels where high current handling and robust mechanical connections are essential. Constructed from ETP grade copper with a purity of 99.96%, it boasts a minimum conductivity of 97.6% IACS.



- The terminal is annealed to prevent cracking during crimping, and a chamfered mouth facilitates easy cable insertion.
- Item identification on cable lug
- The terminal is coated with tin to prevent oxidation and ensure optimal corrosion resistance.
- Their design supports a variety of wire sizes and configurations, facilitating versatile installation and enhanced reliability.
- The hole size punch according as per requirement.
- Material - Copper BS 1977/IS 191 (PART-V)

| Nominal Cross Section mm ² | PESSRL CAT NO. | Size of Bolt Die | A | C | D | B | L | H | J |
|---------------------------------------|----------------|------------------|------|------|----|----|----|----|-----|
| 300 | PESFT-300-8 | 8.5 | 23.5 | 30 | 56 | 42 | 35 | 25 | 101 |
| 300 | PESFT-300-10 | 10.5 | 23.5 | 30 | 56 | 42 | 35 | 25 | 101 |
| 400 | PESFT-400-8 | 8.5 | 28.5 | 36.5 | 56 | 44 | 35 | 25 | 114 |
| 400 | PESFT-400-10 | 10.5 | 28.5 | 36.5 | 56 | 44 | 35 | 25 | 114 |
| 500 | PESFT-500-8 | 8.5 | 30 | 39 | 56 | 48 | 35 | 25 | 124 |
| 500 | PESFT-500-10 | 10.5 | 30 | 39 | 56 | 48 | 35 | 25 | 124 |
| 630 | PESFT-630-8 | 8.5 | 35 | 45 | 65 | 56 | 35 | 25 | 144 |
| 630 | PESFT-630-10 | 10.5 | 35 | 45 | 65 | 56 | 35 | 25 | 144 |